

2019 IMPACT

ENDING YOUTH HOMELESSNESS

1,500+
YOUTH
SERVED

EACH YOUNG PERSON ARRIVES AT YOUTHCARE WITH A UNIQUE STORY AND SET OF CIRCUMSTANCES.

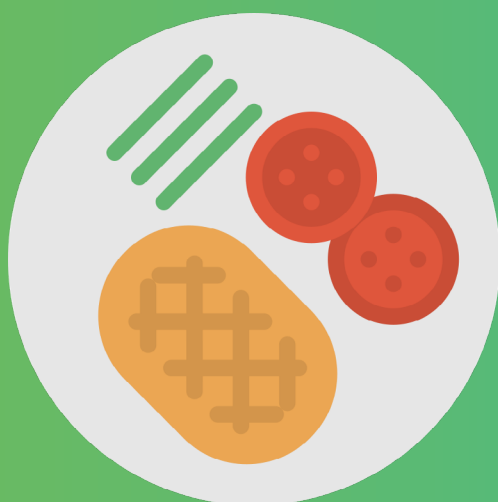
For some youth, services at **ENGAGEMENT CENTERS**—like a hot meal, a connection to staff, a visit to the clinic—are all they need to move forward. For others, the path to stability may include **CORE PROGRAMMING**, such as longer-term shelter, housing, case management, education, and employment training.

ENGAGEMENT

YouthCare’s engagement centers are safe and welcoming spaces where youth can come during the day to enjoy a meal, meet with supportive staff, connect to services, and start to think about next steps.



35,429*
MEALS SERVED
at engagement centers



29,576
at YouthCare’s Orion Center
5,853
at YouthCare’s University District Youth Center (UDYC)

*This number does not include meals served at other YouthCare programs.

CORE PROGRAMMING

701 youth stayed in our
5 **EMERGENCY SHELTERS**



89 youth stayed in our **4**
COMMUNITY LIVING PROGRAMS

96 youth stayed in our
3 **INDEPENDENT LIVING PROGRAMS**

53% of the youth from our community and independent living programs found stable housing upon exit.

280
young people
PARTICIPATED IN EMPLOYMENT TRAINING PROGRAMS



117 **SECTOR-FOCUSED**
68 **PRE-EMPLOYMENT OR JOB READINESS**
134 **INTERNSHIPS**

64% of young people who participated in sector-focused training obtained employment after completing the program.

40 earned their
GED



AT ORION & UDYC GED PROGRAMS: 14
WITHIN HOUSING PROGRAMS: 13
THROUGH YOUTHCARE’S YOUTHBUILD CONSTRUCTION TRAINING PROGRAM: 13

273
YOUNG PEOPLE



Through YouthCare’s Safe Place Program run in collaboration with Friends of Youth...
84 **YOUTH CONNECTED TO SERVICES**

RECEIVED SPECIALIZED CASE MANAGEMENT:

- Sex Trafficking
- Justice System
- School-based
- Family Reconciliation



394

total calls to the Safe Place hotline



SHELTER & HOUSING

EMPLOYMENT

EDUCATION

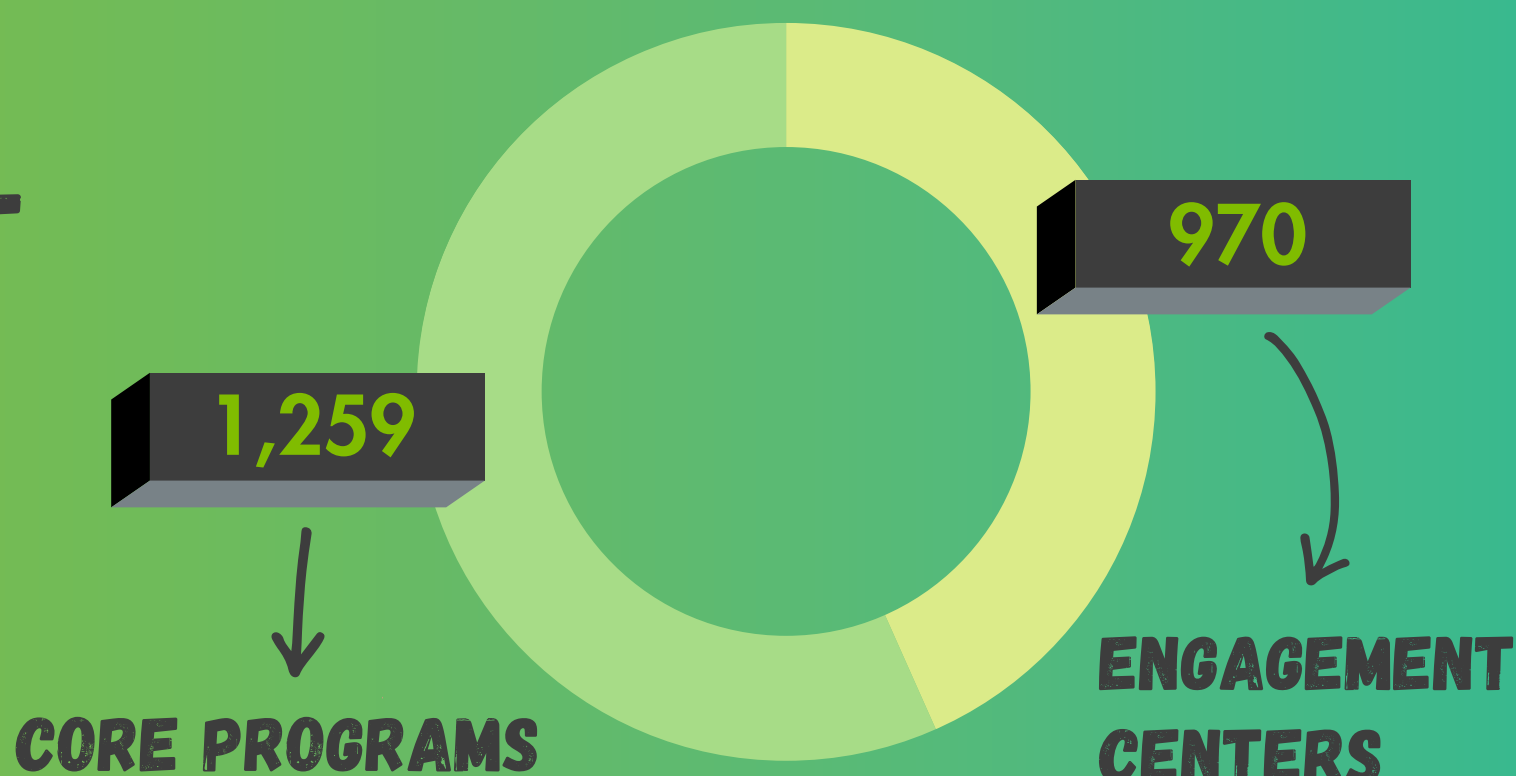
EARLY INTERVENTION & SPECIALIZED SERVICES

A LITTLE ABOUT THE YOUTH WE SERVE...

1,500+

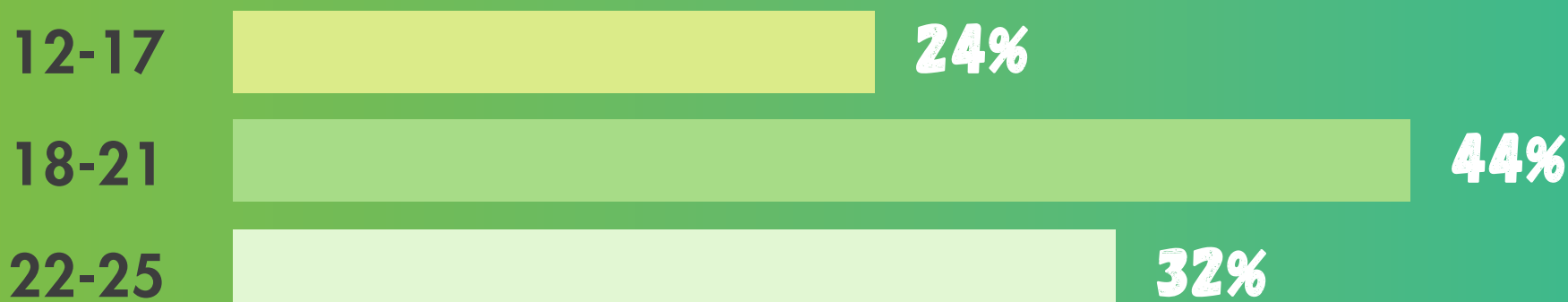
unduplicated* youth served

Through YouthCare's core programs & engagement services

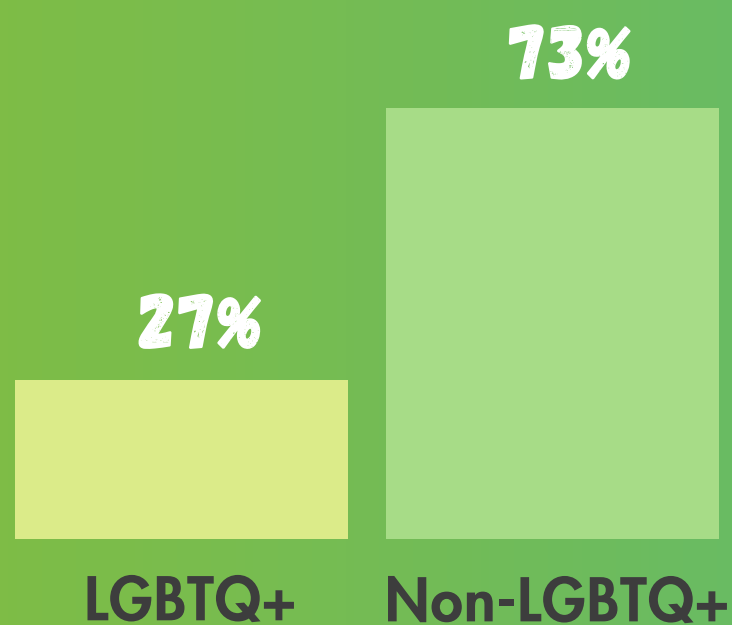


*There is some crossover between youth accessing engagement services and core programming. There are approximately 1,500 unduplicated young people accessing all services.

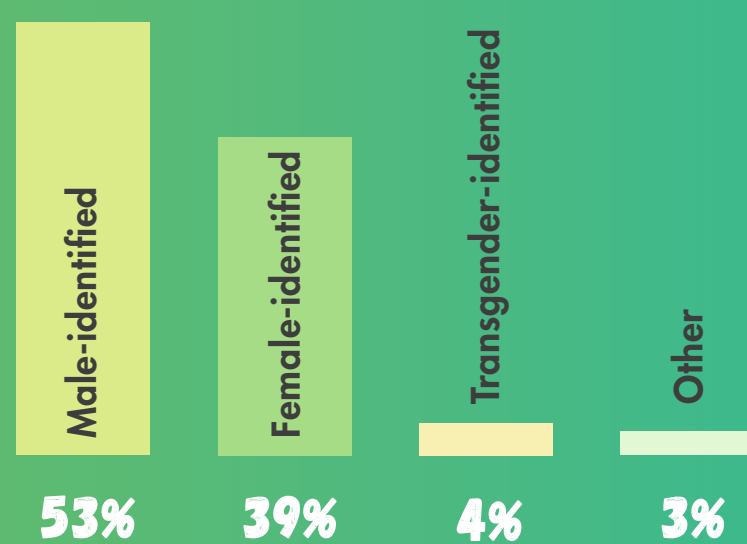
AGE**



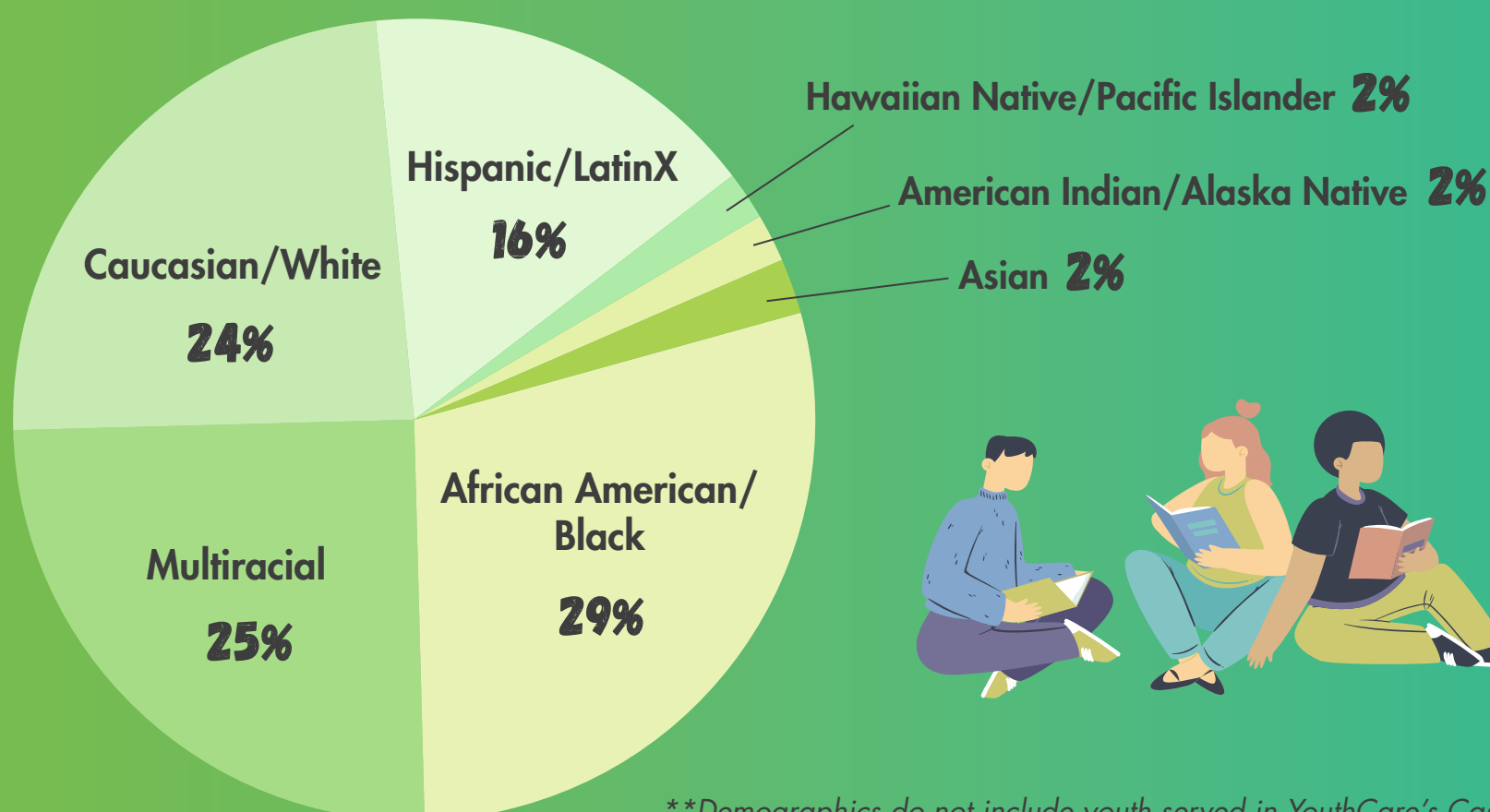
SEXUAL ORIENTATION



GENDER IDENTITY



RACE/ETHNICITY



**Demographics do not include youth served in YouthCare's Casa de los Amigos program or youth who only visited our engagement centers.

TOP BARRIERS

BARRIERS TO STABILITY
SELF-REPORTED BY YOUTH

51% Mental health challenges

42% Juvenile justice involvement

41% Interpersonal violence

IN A NATIONAL STUDY,



of homeless youth reported family conflict in the home.

COMMUNITY SUPPORT



1,785
VOLUNTEERS



8,009 VOLUNTEER HOURS SERVED

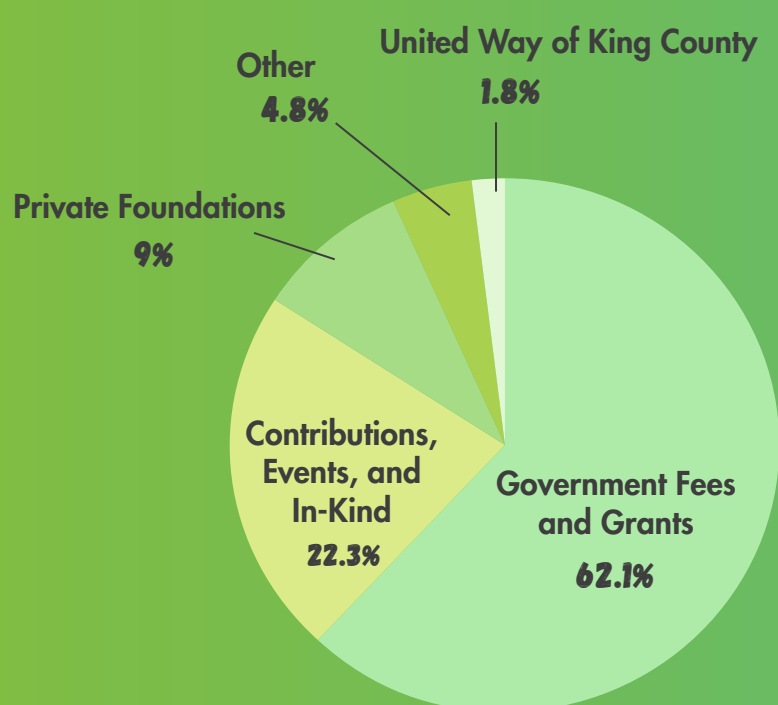
Engagement Center meals served by volunteers: **90%**

VOLUNTEER GROUP PROJECTS COMPLETED: **54**

39 FUNDRAISERS HOSTED BY SUPPORTERS



FINANCIALS



REVENUE

Private Foundations	\$1,580,074
Contributions, Events, and In-Kind	\$3,906,862
Government Fees and Grants	\$10,893,732
United Way of King County	\$322,500
Other	\$846,909

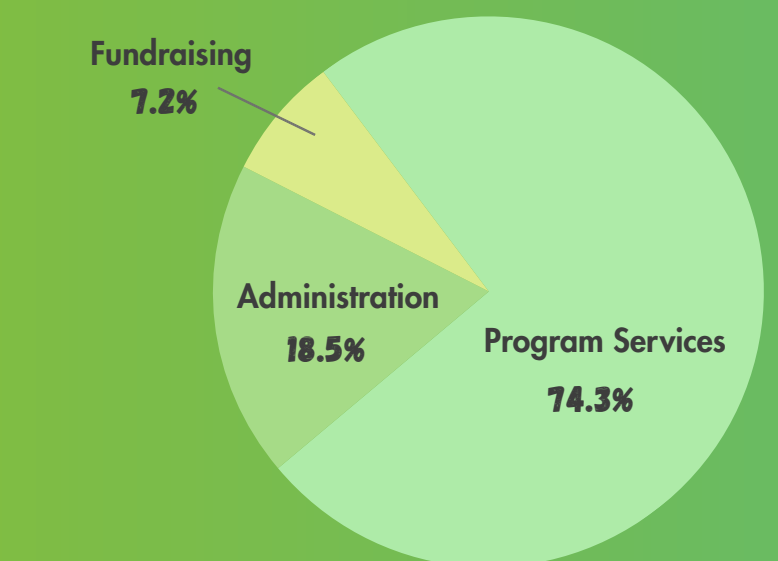
Total Income \$17,550,077

EXPENSES

Program Services	\$12,158,312
Administration	\$3,026,143
Fundraising	\$1,183,430

Total Expenses \$16,367,885

Total Assets	\$23,798,939
Total Liabilities	\$1,496,263
Net Asset Balance	\$22,302,676



BOARD LIST

OFFICERS

Board Chair, Karen F. Jones, JD

Secretary, Erin Coomer

Treasurer, J.D. Kritser

MEMBERS

Beau August

Mark Bennet

Justice Bobbe Bridge

Annie Chae

Richard de Sam Lazaro

Rep. Mary Lou Dickerson

Stephanie Fiano

Carmen Hudson

Ann Johnson

Mellicia Marx

Alyssa Mehl Alcantara

Tom Neary, CPA, MIM

Robert W. Overell, PhD

Francesca Peri

Pashtana Rahman

Ken Robertson

Mark Solomon

Donate Stewart

Hugh Straley, MD

Matthew Turetsky, JD

Cassie Walker Johnson

Ann Williams

LUNCHEON SPONSORS

PRESENTING

Ben Bridge Jeweler, Expedia Group

PARTNER

Copiers NW, HomeStreet Bank, Kaiser Permanente, Laird Norton Company, Starbucks Coffee Company

COMMUNITY

Aetna, Bill & Melinda Gates Foundation, Calfo Eakes & Ostrovsky PLLC, Diane Terry - Windermere Real Estate Co., Intersection, Marriott SpringHill Suites, NHL Seattle

PATRON

Arcora Foundation, Brettler Family Foundation, Cardea, Clark Nuber PS, Columbia Pacific Wealth Management, Davis Property Management, Filter, Inc., Fox Rothschild, Gourmondo Catering Co., Hudson Group, JayMarc Homes, MCSB, Inc., Media Plus, One Eighty Foundation, Propel Insurance, Schwabe, Williamson & Wyatt, Seattle Cancer Care Alliance, Seattle Children's, Slalom Consulting, USI

ADVOCATE

Li'l Woody's, Rafn Company, Sound Credit Union, Tomboy X, Verity Credit Union

CORPORATE & FOUNDATION SUPPORT

35th North Skateshop • 3STEP Sports, LLC • The 5th Avenue Theatre • A.T. Still University SOMA • Action In Practice Foundation • Acupuncture Northwest • Adobe Systems, Inc. • AHT Insurance • Alaska Airlines Foundation • Alexandria Real Estate Equities, Inc • Alia Salon • All Star Directories, Inc. • Allbee Romein • Alliant Credit Union • Alliant Insurance Services • Allstate • Amazon.com, Inc. • AMLI Residential • Amour Propre Skin & Body • Ankrom Moisan Architects • Answering Service Care • Antonio Salon • Apex Foundation • Apex Learning Inc • Apollo Academy • Arivale • Art Marble 21 • Artefact • Ask Sophie • Assistance League of Seattle • Assumption Catholic Church • Auth0 • Avog • Bainbridge Community Foundation • Ballmer Group • Bank of America • Beehive Salon • Bellevue High School • Bellevue Plumbing Inc. • Berkley North Pacific • Bertschi School • Bike Works • Bishop Fleet Foundation • Bishops Capitol Hill • The Boeing Company • Boeing Employees Credit Union • Bohemian Foundation • Boston Consulting Group • Boy Scouts of America Troop 175 • Brettler Family Foundation • Briarcrest Elementary • Bristol-Myers Squibb • The Brooks and Suzanne Ragen Family Foundation • BrunswikSt LLC • Bureau Of Fearless Ideas • Burke Museum of Natural History and Culture • Burn Cycle Washington LLC • Campbell Family Foundation • Champion Foundation • Cancer Research and Biostatistics • Capitol Hill Housing Foundation • Capstone Solutions Inc • Carl Hossman Family Foundation • CFO Selections • Champions Foundation • Chan Zuckerberg Initiative • Chicago Title Insurance Co. • Chief Sealth High School • Chinook Book Seattle • City of Seattle • City of Seattle Parks and Recreation • The Clarius Group • Clark Construction Group, LLC • The Climate Corporation • Coast Guard Holiday Stockings for Homeless Children • CoBank ABC • Compass • Concordis LLC • Cookiecarts LLC • Core Matters • Pilates Conditioning • Cornell & Associates • Cornuto Pizzeria • Criminal Justice Training Commission • CVS Pharmacy • Dakota Art Store • Daughters of the American Revolution - Rainier Chapter • Discount Tires • DLR Group • The Downtown School • DPR Construction • Earl B. Gilmore Foundation • East Shore Unitarian Church • East West Connection • easyXAFS LLC • ECO Electric and Plumbing • Edlen Electrical • Edmund and Betsy Cabot Charitable Foundation • Edward Jones • Ehrlich Donnan Foundation • Eileen Fisher • Elevated Style LLC • Elliott Bay Ward • Ellison Foundation • Espresso Vivace, Inc • The Evans Family Foundation • Everflow Seattle • EvergreenHealth • evo • F5 Networks • Facing Homelessness • Fairwood Community United Methodist Church • Fairwood Lions Club • Family Fun Center • Farallon Consulting • Fehr & Peers • Folley Family Foundation • Formative • Forum Solutions • The Foster Foundation • Frank B. and Virginia V. Fehsenfeld Foundation • Frankie & Jo's • Fraternal Order of Eagles #1 • Fuego Holdings LLC • Fulcrum Capital • Garfield High School • Gary Manuel Aveda Institute • Georgetown Morgue • Gethsemane Lutheran Church • Girl Scout Troop 40171 • GIS International Group • Giving Tech Labs • Glasswing • GMMB • Go Time Athletics • Good Today • The GoodCoin Foundation • Goodwill Industries International, Inc. • Google • GoPuff • Gorder Family Foundation • GPD Employees Foundation Inc. • Gradco, LLC • Graham Holdings Company • Grifols Biomat, USA • Guardian Security • Hart Crowser, Inc. • Harvest Foundation • Heinrich-Dahlheimer Donor Advised Fund • Helen S. and John J. McKetta Jr. Charitable Foundation • Hellam Varon & Co. Inc. PS • Hello Robin • Hilen Foundation • Hilton Garden Inn • Hilyer Dispute Resolution • Hoedemaker Pfeiffer • Holy Names Academy • Horizon House • IBM Providence • Image Concepts • Industry Salon Seattle • Institute for Health Metrics and Evaluation • Interlake High School • International Community School • Intertox • Islander Middle School • Issaquah Key Club • J.E. Fehsenfeld Family Foundation • Jackson Lewis • Jewish Federation of Greater Seattle • The John C. & Karyl Kay Hughes Foundation • Johnson & Johnson • Julia Love Pritt Family Fund • Kaladi Brothers Coffee, LLC • Kamiak High School • Kaplan International • Kenmore Camera • Kenworth Employees AYD Club • KEXP • KeyBank Foundation • King County Nurses Association • Kline Galland • Knackshops • Kong Academy • Kotis Design • KPFF Consulting Engineers • KPMG LLP • Krivens Frohlich Family Fund • Kroger • Lake Forest Park Rotary • Lake Union Rotary • Lakeside Industries, Inc. • Lakeside School • Lamb Foundation • The Lauren & Alex Rolfe Charitable Fund • Lenore Hanauer Foundation • Leslie Fund, Inc. • Liberty Mutual Insurance • LifeLong AIDS Alliance • Little Explorers Family Day Care • Livingston Foundation • Loeb Family Charitable Foundation • Logic20/20, Inc. • Lucky Seven Foundation • Luxoft • Lynn and Bruce Gibson Foundation • Macrina Bakery • Maisano Mediation LLC • Majestic Bay Theatres • Mapbox AP • Marguerite Casey Foundation • Marios Mitchells • Martinet Foundation • Maveron • Medina Foundation • MEF Associates • Mercer Island High School • Mercer Island Presbyterian Church • Merriman Wealth Management • Mick Lamb Foundation • Microsoft • Milkwood & Co. • Milliman • Mirabella Washington Foundation • Mirror Mirror Hair Salon • Mitchell MCN • Moccasin Lake Foundation • Molly Moon's Homemade Ice Cream • Molly Sandvick Design Services • Momentum Dance Academy and Ensemble • Moonlight Tattoo • MoPOP • Morna Reid-Schwartz Foundation • Morningside Academy • Mr. Socks & Friends • Muckleshoot Indian Tribe • Musang Seattle • My Time For Massage • NanoString Technologies • National Board for Certified Counselors • The Nature Conservancy • NBBJ • Nofsinger Group • North Forty Group • North Seattle College • North Travel Service, Inc. • Northwest Center • NW Children's Foundation • Northwest Naturals • O'Dea High School • Oh My Green • One Four One • OneFamily Foundation • Oracle • Our Lady of the Lake School • Outdoor Research • Pacific Plumbing Supply Co., LLC • Pacific Real Estate Services, Inc. • Pacific Science Center • Pacific Vascular • Pagliacci • Partner's Crackers • Pedersen's Event Rentals • PeopleFirm • Perkins Coie • Perkins&Will • Petunia Foundation • Physicians Insurance • Pioneer Barber Company • Planned Parenthood • PNBA • The Pony Pub, LLC • Popach Real Estate • Populus Group • POSSIBLE • Presidential Transportation • Proliance Surgeons Inc. • Providence Health Systems • Queen Anne Lutheran Church • Queer & Trans Youth Music Project • Quorum Review IRB • Rachel's Ginger Beer • Raikes Foundation • RAZZiS PIZZERiA • RealNetworks Foundation • Redeeming Soles • The Rite Aid Foundation • Robert Chinn Foundation • Rock Box • Room & Board • Roosevelt High School • Rooy Shoes • Ross Stores, Inc • Russell & Eleanor Horn Foundation • Russell Investments • Ryther Child Center • Safeco Insurance Fund • Salesforce.org Foundation • Samena Swim & Recreation Club • SAP Concur • School's Out Washington • Schroeter, Goldmark & Bender PS • Schuchart Corporation • Schultz Family Foundation • Schultz Miller Inc. • Scotch & Soda • Sea Creatures • SeaTec Consulting Inc. • Seattle Aquarium • Seattle Arctic Club • Seattle Art Fair, LLC • Seattle Bouldering Project • Seattle Church of Christ • Seattle International Film Festival • Seattle Mariners • Seattle Police Department, North Precinct Advisory Council • Seattle Printworks • Seattle Seahawks • Seattle Sounders FC • Seattle Symphony • Seattle Theatre Group • Seattle Unity Church • Seattle University • Seattle Works • Seattle's Union Gospel Mission • Security Properties, Inc. • Sellen Construction • Seneca Real Estate Group • The Sevan Charitable Foundation, Inc. • Seven Coffee Roasters Market & Cafe • Seymour & Sylvia Rothchild Family 2004 Charitable Foundation • Shake Shack • Shapiro Family Foundation • Shrontz Family Foundation • Skytap • Smartsheet • Snap Inc. • Sole Food • Soma Intimates • Soroptimist International Seattle Metropolitan • Spa Noir • St. Brendan Parish • St. Bridget Church • St. Jude Children's Research Hospital • Stand Up For Kids • Stanford Group • The Starbucks Foundation • Stokes Lawrence, P.S. • StolenYouth • Sub Pop Records • SunOutdoor Advertising • Super Jock 'N Jill • Susan Elizabeth Foundation • Swedish Health Services • Swedish Pediatric Specialty Care • The Swinerton Foundation • Symetra • Tableau Software Foundation • Taphandles • Taproot Theatre • TD Ameritrade Clearing • Temple Beth Am • Thomas V. Giddens Jr. Foundation • Thomson Reuters • Three Dragons Academy • Thrive Causemetics • Tim Lenihan Homes, LLC • Timbuk2 • TisBest Charity Gift Cards • The TJX Companies, Inc. • T-Mobile • Traction • Trader Joe's • Traxx Indoor Raceway • Treeline Foundation • Trinity United Methodist Women • Trophy Cupcakes • Tulalip Tribes Charitable Contributions • Tully & Associates • Twitter • Tyler Technologies • U.S. Bank Foundation • U.S. Food And Drug Administration • Unico Properties LLC • Unionview Wealth Partners • United Airlines • United Way of King County • Unity Technologies • Universal Life Church • University of Utah • University of Washington • University of Washington Medical Center • University Prep • University Village • UPS • Vain • Vann.Edge Salon • Vans • Vedanta Society of Western Washington • Velocity Dance Center • The Vera Project • Verizon Foundation • Verus Advisory, Inc. • Via Tribunali • Virginia Mason Medical Center • VMLY&R • Volta People Services • Vulcan Inc. • Waldron • Wallingford United Methodist Church • Washington State Combined Fund • Washington State Convention Center • Washington State Society of Healthcare Attorneys • Washington University in St. Louis • WashPIRG UW • A Way Home Washington • Wedgwood Presbyterian • West Mercer Elementary School • West Seattle High School • Westman's Bagels and Coffee • Westside School • Westside Unitarian Universalist Congregation • Weyerhaeuser Giving Fund • Wheeler Family Foundation • Whitmire and Associates • Willis Family Trust • Windermere Foundation Trust • Women's Philanthropic Investment Group of Seattle • Woodland Park Zoo • The World is Fun • Wyman Youth Trust • YouthBuild USA • Zig Zag Cafe • Zillow, Inc.